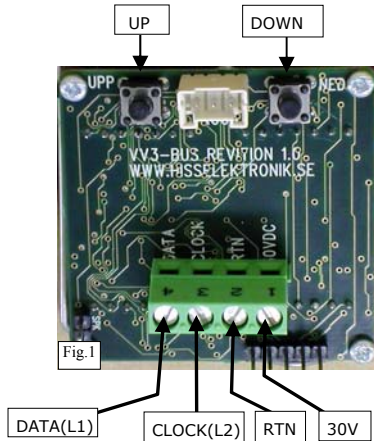


### VV3 for Otis Bus-system.

A more thorough manual will be released later...

This version of VV3 is made for Otis Bus system.



**Connecting VV3 :**  
 VV3 is connected with 4 wires direct on Otis Bus signals, 30V, RTN, DATA (L1) , CLOCK (L2).

#### Programming:

This first version is completely compatible with the Otis-bus and needs no programming at all.

This requires that the control system is configured according to Otis "Standard I/O list".

In order to make the VV3 to show direction arrows and "Out of service" the RS address have to be set on each floor indicator, this is made by pressing down the two buttons for 3 seconds, a 2-digit RS code will then appear on the display, to change this code: use the "UP" or "DOWN" button **fig.1** until the right code appears select by pressing the two buttons simultaneously for 0,5 seconds.

The RS-addresses for the direction arrows are 37-52, where 37 is the bottom floor and 52 is floor 16.

If the floorindicator is placed in the lift cabin, choose "C", this will make the "OVERLOAD" message to show if there is an overload contact installed in the lift.

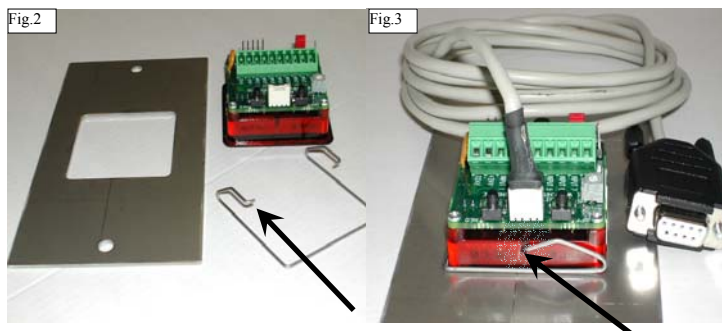
#### Change the floor names:

With Otis hand tool: use the same procedure as with other Otis floor indicators.

In the complete version it will be possible to set the floor names independent of the control system, this will make it possible to show "½" and "Å, Ä and Ö" and other special signs.

The RS-addresses will also be able to be set separately, without being forced using the standard I/O list.

In this first version the 1-2-3 tones arrival chime is not in use.



#### MOUNTING:

1. Mount the floor indicator in a hole 48X48mm (standard Schäfer™-lens hole).
2. The mounting clip *fig.2.* is mounted on the backside.
3. Fasten the clips end pins in the two holes on the side of the lens. *fig.3.*