



## AZ 07 K 08106

- Single wire entry
- Thermoplastic enclosure
- Contact pin in actuator bridge
- 1 Actuating planes
- Protection class IP20
- transparent cover
- fixing screws M4 undetachable, captive
- Fitting dimensions suitable for AZ 06x
- Self-cleaning through the frictional movement of the contact bridges
- Enclosure with mounting slots

## Data

### General data

Standards	EN 81-20 EN 81-50
Enclosure material	Plastic, glass-fibre reinforced thermoplastic, self-extinguishing
Material of the housing cover	transparent thermoplastic, self-extinguishing
Gross weight	30 g

### General data - Features

Suitable for elevators	Yes
Number of safety contacts	1

### Mechanical data

Actuating panels	1
Mechanical life, minimum	1,000,000 Operations
Actuating stroke	7 mm

Actuating force, approx.	1.6 N
Mounting	Fine-adjustment through slotted holes

### Mechanical data - Connection technique

Termination	Screw terminals M20 x 1.5
Cable entry	Single wire entry

### Mechanical data - Dimensions

Width	72 mm
Height	22 mm
Depth	19 mm

### Ambient conditions

Degree of protection	IP20
Ambient temperature	-15 ... +70 °C
Relative humidity, maximum	95 %
Note (Relative humidity)	non-condensing

### Ambient conditions - Insulation values

Rated insulation voltage $U_i$	500 V
--------------------------------	-------

### Electrical data

Thermal test current	4 A
Utilisation category AC-15	230 VAC
Utilisation category AC-15	2 A
Utilisation category DC-13	200 VDC
Utilisation category DC-13	2 A
Switching element	Opener (NC)
Switching principle	Self-cleaning pressure contact
Material of the contacts, electrical	Silver-plated Cu rivets

## Scope of delivery

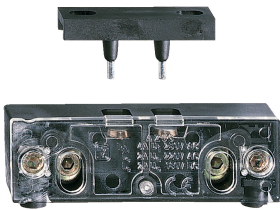
Scope of delivery Actuator must be ordered separately.

## Note

Note (General) The connecting screws can be sealed with plugs. (2 plugs per switch)

## Pictures

### Product picture (catalogue individual photo)

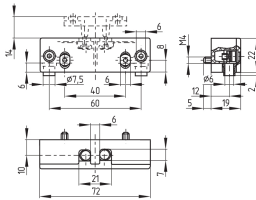


ID: kaz06f01

| 449,3 kB | .jpg | 303.389 x 240.594 mm - 860 x 682 px - 72 dpi

| 37,2 kB | .png | 74.083 x 58.914 mm - 210 x 167 px - 72 dpi

### Dimensional drawing basic component



ID: 1az07g01

| 42,2 kB | .cdr |

| 10,0 kB | .png | 74.083 x 51.506 mm - 210 x 146 px - 72 dpi

| 123,2 kB | .jpg | 352.778 x 245.181 mm - 1000 x 695 px - 72 dpi

Schmersal Nordiska AB, F O Petersons gata 28, S-421 31 Västra Frölunda

The details and data referred to have been carefully checked. Images may diverge from original. Further technical data can be found in the manual. Technical amendments and errors possible.

Generated on: 29/05/2023, 07:27