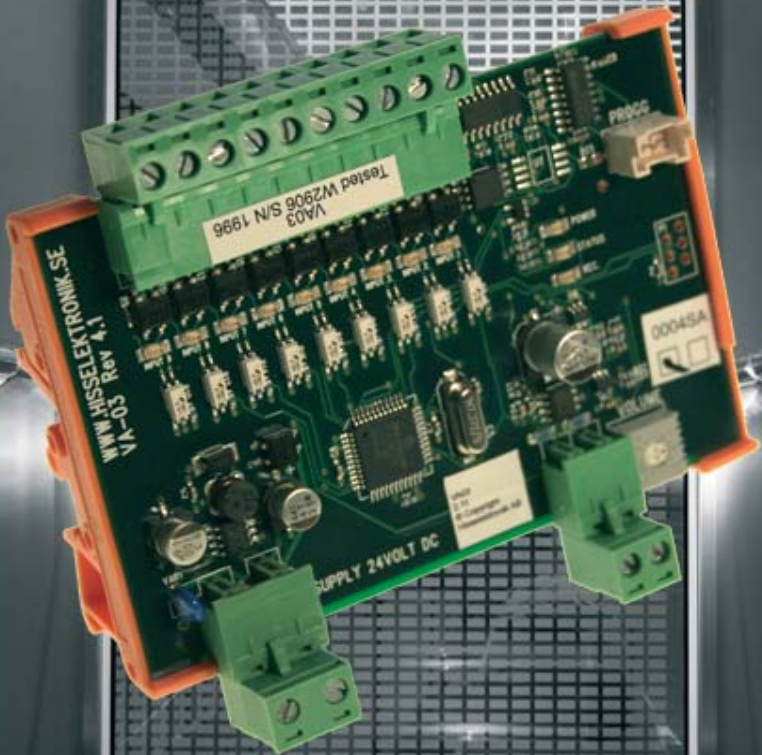




Eng v2.5

# VA03 Manual



  
**Hisselektronik**  
[www.hisselektronik.se](http://www.hisselektronik.se)

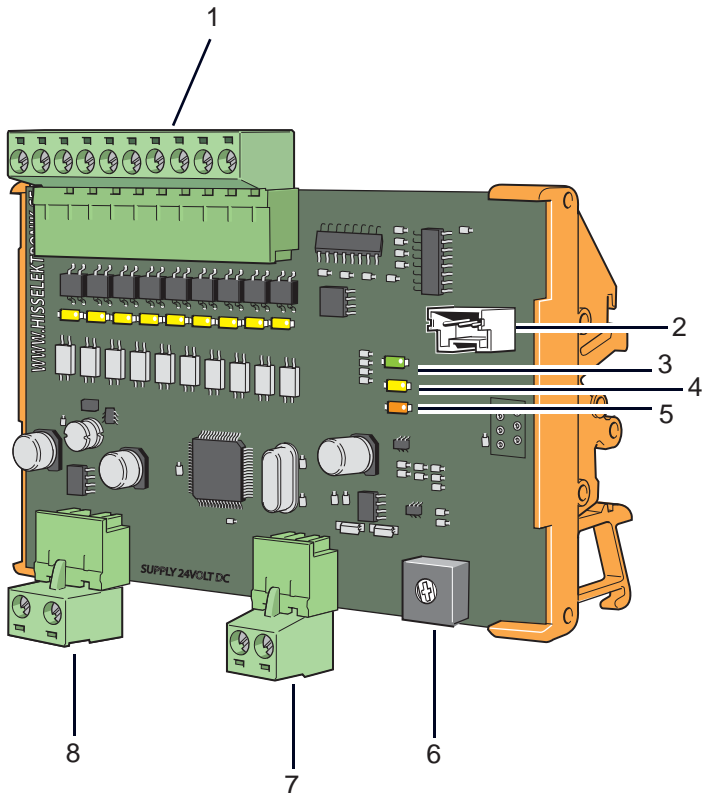
**Contents**

Introduction	2
Configuration	3
Configure with SafeLine Pro	4
Measurements	5
Connections	5



The content in this catalogue is protected by the copyright laws. The name **SafeLine™** is a registered trademark. All content in this catalogue is owned by Hisselektronik AB.

## Introduction

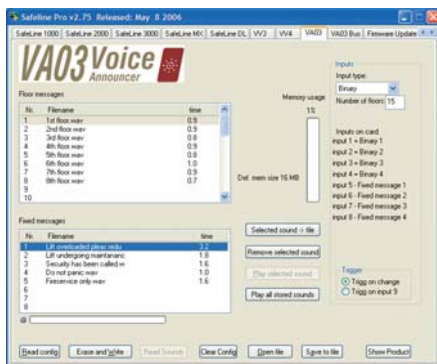
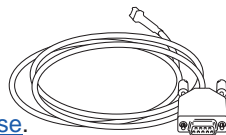


1. Connector for inputs.
2. RS232 PC connection.
3. Green LED, flashes when the unit is powered.
4. Yellow LED, flashed when a message or music is played.
5. Red LED, flashes during communications with a PC.
6. Volume control.
7. Connector for speaker.
8. Power (20-30 VDC).

## Configuration

VA03 is normally delivered prerecorded and configured according to the customers specification. In SafeLine Pro Version 2.23 or later, changes can be made in the prerecorded messages.

SafeLine Pro can be downloaded for free on our web site: [www.safeline.se](http://www.safeline.se).



### Downloading new voice messages:

If the prerecorded messages need to be changed or if new messages have to be added we can send the files to you by e-mail and you can easily download them in VA03.

### When recording and downloading own sounds.

The sound have to be in \*.wav-format, mono with 16-bits resolution and 8 or 16 kHz sample frequency PCM. VA03 is normally delivered with 512 KB Flash-memory this is enough for 60 sec of recording at 8 kHz or 30 sec in 16 kHz, if needed the flash-memory size can be doubled.

Both 8 and 16 kHz sampled \*.wav-files can be downloaded in the same VA03.

**If you have recordings in any other resolutions or format they have to be converted first.**

### Inputs:

Standard configuration at delivery is:

Input 1-4, are Binary inputs 1,2,4,8.

Input 5-8 are fixed messages that are used for all floors like "Doors are closing", "Lift is overloaded", "Fire alarm" etc.

### Configuration:

The inputs can be configured with SafeLine Pro:

Binary / Decimal / Gray code inputs for maximum 1-32 floors.

Fixed messages 1-8 can be selected.

Trigg signal: Message can be played when a trig input is activated, or when one of the inputs status are changed.

All changes and downloading of new messages have to be made from SafeLine Pro.

### Polarity and voltage:

The input voltage can be between 20-30 VDC positive or negative voltage.

Common: Must be the opposite of the input voltage (if the inputs are plus (+)) common have to be "minus(-)".

Supply voltage must be 20-30 VDC.

## Configure with SafeLine Pro

**Floor messages:** Shows \*.wav-file for selected floor. Double click to select your files.

**Time:** Displays duration in seconds on each \*.wav file.

**Memory usage:** Displays remaining memory.

**Input type:** Choose how the inputs should be configured. Input type can be Binary, Gray code or Decimal.

**Number of floors:** Choose how many floors to be used.

**Inputs on card:** Select input format and configure how to use the input signals. Input format can be Binary, Gray code, or Decimal. Input 9 is always used as "trigg"

**Trigg on change / trigg on signal:** Choose how to start playing the sound messages.

**If "trigg on change" is selected, VA03 will play the message when the input status is changed.**

**Nr (floor nr):** Double click to get the \*.wav-file for each floor (1-32).

Nr.	Filename	time
1	1st floor.wav	0.9
2	2nd floor.wav	0.9
3	3rd floor.wav	0.8
4	4th floor.wav	0.9
5	5th floor.wav	0.8
6	6th floor.wav	1.0
7	7th floor.wav	0.9
8	8th floor.wav	0.7
9		
10		

Nr.	Filename	time
1	Lit overloaded pleas redu	3.2
2	Lit undergoing maintenanc	1.8
3	Security has been called.w	1.6
4	Do not panic.wav	1.0
5	Fireservice only.wav	1.6
6		
7		
8		

**Play selected sound:** Play selected \*.wav-file.

**Play all stored sounds:** Play all \*.wav-files.

**Stop:** Stop playing a selected \*.wav-file.

**Read config:** Read configuration from a programmed VA03 (sound+config).

**Write Config & Sound:** Write changes to VA03.

**Erase and Write:** Erase all \*.wav-files from VA03.

**Read Sounds:** Reads the \*.wav-files that is programmed in the VA03.

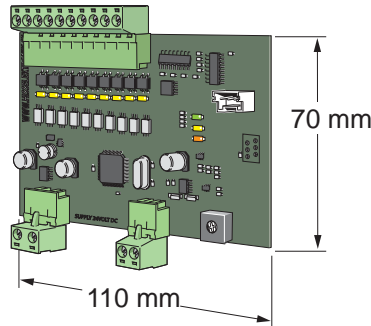
**Clear Config:** Erase all fields, and changes all settings to default.

**Open File:** Open a saved \*.VA3.

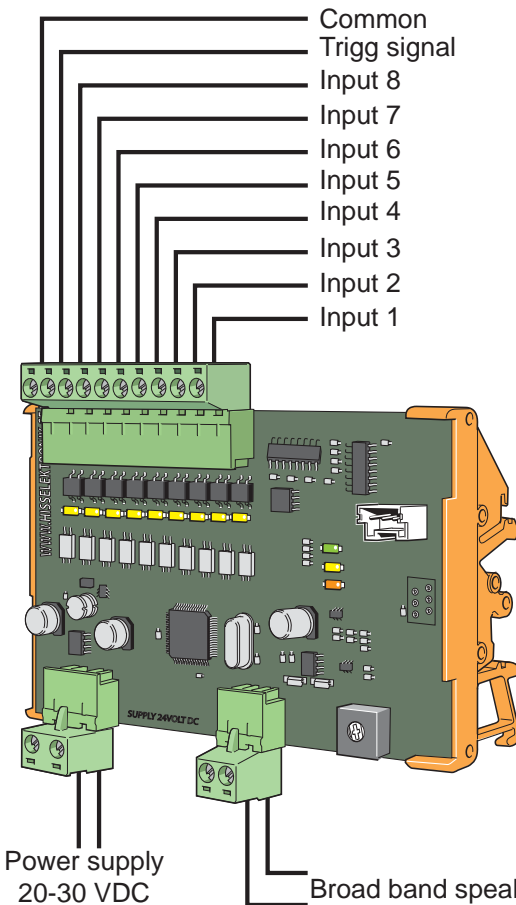
**Save To File:** Saves all parameters and sounds in a file with the extension \*.VA3.

**Show Product:** Show a picture of VA03.

## Measurements



## Connections



Input 1-8: Connections from controller.  
Trigg: Connection from trigg signal.  
Common: Supply voltage for all inputs.

If the inputs are connected to positive voltage (+VDC), common must be negative (-).

If the inputs are connected to negative voltage (-VDC), common must be positive (+).



Hisselektronik AB  
Antennvägen 10  
SE-135 48 Tyresö  
SWEDEN

Phone: +46 (0)8 4477932

Fax: +46 (0)8 4477931

E-mail: [info@safeline.se](mailto:info@safeline.se)

Webb: [www.safeline.se](http://www.safeline.se)

Support forum: [www.safeline.se/support](http://www.safeline.se/support)