



Industrie Service

EU TYPE-EXAMINATION CERTIFICATE

According to Annex IV, Part A of 2014/33/EU Directive

Certificate No.: EU-OG 082/1

Certification Body of the Notified Body: TÜV SÜD Industrie Service GmbH
Westendstr. 199
80686 Munich – Germany
Identification No. 0036

Certificate Holder: P.F.B. s.r.l.
Via Raimondo Dalla Costa, 690
41122 Modena – Italy

Manufacturer of the Test Sample: P.F.B. s.r.l.
Via Raimondo Dalla Costa, 690
41122 Modena – Italy
(Manufacturer of Serial Production – see Enclosure)

Product: Overspeed governor, detecting and tripping element fixed at the overspeed governor, as a part of the protection device against overspeed for the car moving in upwards direction

Type: R1 LR

Directive: 2014/33/EU

Reference Standards: EN 81-20:2014
EN 81-50:2014
EN 81-1:1998+A3:2009
EN 81-2:1998+A3:2009

Test Report: EU-OG 082/1 of 2017-01-13

Outcome: The safety component conforms to the essential health and safety requirements of the mentioned Directive as long as the requirements of the annex of this certificate are kept.

Date of Issue: 2017-01-13


Achim Janocha

Certification Body "lifts and cranes"



Annex to the EU Type-Examination Certificate
No. EU-OG 082/1 of 2017-01-13



Industrie Service

1 Scope of application

1.1 Generally

1.1.1 Driving rope

Category

Round strand rope made of steel wire

Diameter

6 – 8 mm

1.1.2 Tension forces (force produced by the tensioning weight, acting on the axis of rope deviating pulley)

Tension force determined in the test [N] (New rope and groove)	Tensile force in	
	Down direction [N]	Up direction [N]
583	736	---
1020	1619	451

Retraction of the safety gear in both directions of rotation permissible.

The safety component can fulfil two security features (1.2 and 1.3).

1.2 Using as an overspeed governor – permissible speeds

Permissible tripping speed

0.41 – 2.57 m/s

Permissible rated speed

≤ 2.23 m/s

1.3 Using as a part of the protection device against overspeed for the car moving in upwards direction

The overspeed governor can be used as a part of the protection device against overspeed for the car moving in upwards direction. Monitoring of upward speed will be done by overspeed governor itself and a braking device can be triggered (engaged) via the overspeed governor's electric safety device or mechanically.

2 Terms and Conditions

2.1 Above mentioned safety component represents only a part at the protection device against overspeed for the car moving in upwards direction. Only in combination with a braking component in accordance with the standard, which must be subjected to an own type-examination, can the system created fulfil the requirements for a protection device.

2.2 The adjusted tripping speed and the safety switch must be sealed against unauthorized adjustment (safety switch e.g. by colour sealing of the fastening bolts).

2.3 Positioning of the overspeed governor vertical and rope deflection with 180° angle of wrap.

2.4 The identification drawing R.1_000B including stamp dated 2017-01-13 shall be included to the EU type-examination for the identification and information of the general construction and operation and distinctness of the approved type.

2.5 The EU type-examination certificate may only be used in combination with the corresponding annex and enclosure (List of authorized manufacturer of the serial production). The enclosure will be updated immediately after any change by the certification holder.

Annex to the EU Type-Examination Certificate
No. EU-OG 082/1 of 2017-01-13



Industrie Service

3 Remarks

- 3.1 Changes of characteristics in scope of application over time are not covered by this type examination.
- 3.2 Possible design variants (also in combination):
- Preliminary switch off
 - Protection device against rope leaving the pulley
 - Protection cover
 - Testing groove
- 3.3 The overspeed governor can also be used to a counterweight in compliance with the permissible tripping speed.
- 3.4 This EU type-examination certificate was issued according to the following standards:
- EN 81-1:1998 + A3:2009 (D), Annex F.4 and F.7
 - EN 81-2:1998 + A3:2009 (D), Annex F.4
 - EN 81-20:2014 (D), part 5.6.2.2.1.7, and part 5.6.6.11
 - EN 81-50:2014 (D), part 5.4 and 5.7

A revision of this EU type-examination certificate is inevitable in case of changes or additions of the above mentioned standards or of changes of state of the art.

**Enclosure to the EU Type-Examination Certificate
No. EU-OG 082/1 of 2017-01-13**



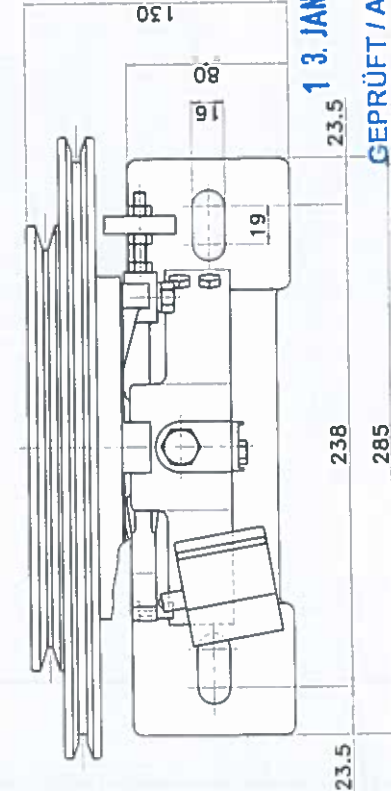
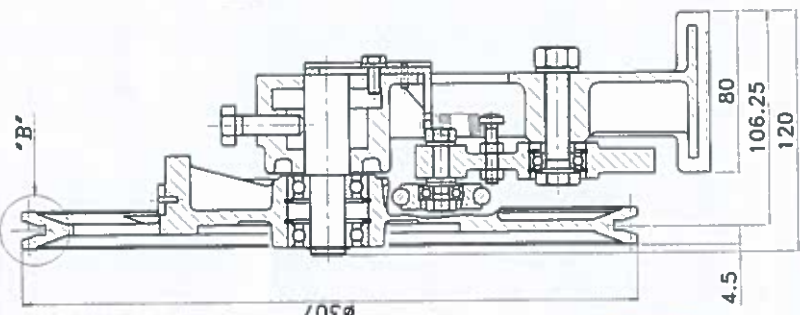
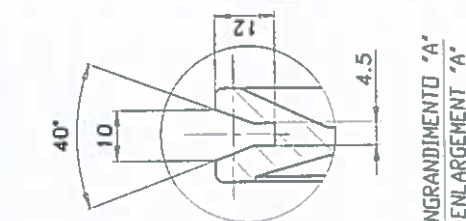
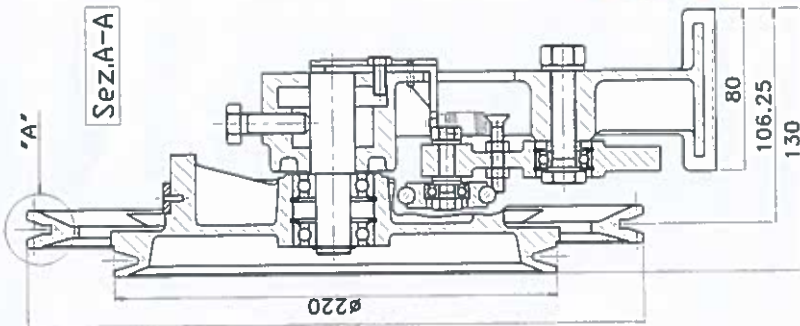
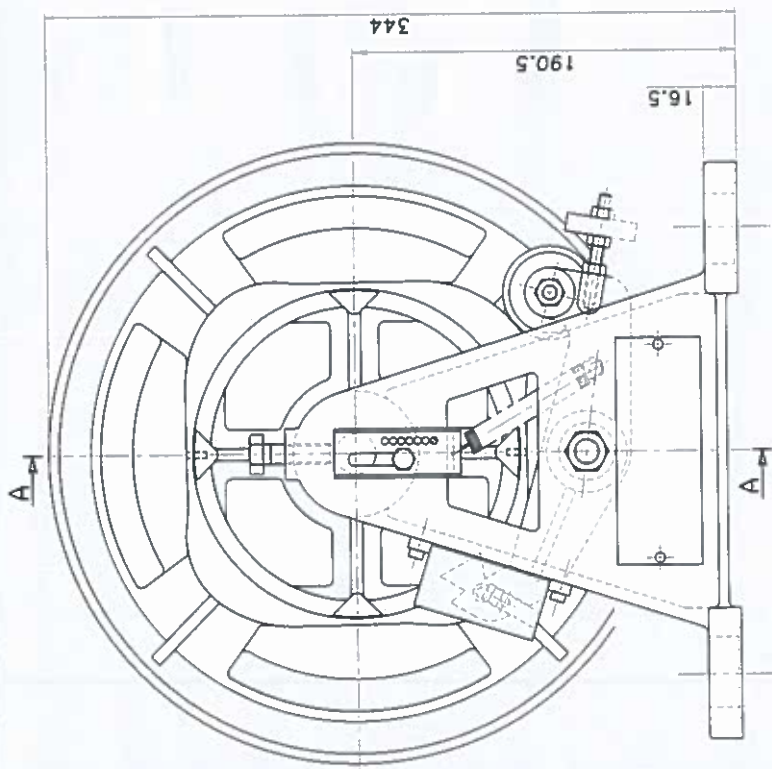
Industrie Service

Authorised Manufacturer of Serial Production – Production Sites (valid from: 2017-01-13):

Company	P.F.B. s.r.l.
Address	Via Raimondo Dalla Costa, 690 41122 Modena – Italy

- END OF DOCUMENT -

APPLICAZIONE PULEGGIA DI PROVA



13 JAN. 2017

GEPRÜFT / APPROVED

TUV SUD Industrie Service GmbH
Prüflaboratorium für Produkt- und Fördertechnik
Weststraße 199
80566 München
Sachverständiger-Expert

MODIFICHE - MODIFIKATIONEN

NR.	DATA	DESCRIZIONE	NR.	DATA	DESCRIZIONE
1	03/'99	MODIFICATA DIMENSIONE 192 A 190.5	4	22/06/'15	VERIFICATO DISEGNI (StudioTre srl)
2	07/'00	AGGIUNTO CARTER CON RELATIVI SUPPORTI	5	06/10/'16	AGGIUNTO VERS. CON PULEGGIA DI PROVA (StudioTre srl)
3	05/'02	AGGIUNTO VARI VEDERE COMPLESSIVO GRANDE	6	-	-
Snussi non quotati / 45°		scala 1:2,5	LAVORGEN.		NOTE
Reggi non quotati		DENOMINAZIONE	MATERIALE		
TOLLERANZE LIBERE		COMPLESSIVO	QUALITA'		
S.L. RUOSSI TOLL.			STATO-N°-MOD.		
V ± 0.2			DIMEN.		
V ± 0.15			PESO kg.		
V ± 0.1			T.T.		
V ± 20°			DIS.		VER.
V ± 0.04			COD.N°		DATA
V ± 0.04			DIS.N°		10/'98
V ± 0.04			COD.N°		8024201300
V ± 0.04			DIS.N°		(GENERIC)
V ± 0.04			DIS.N°		R.1_000B



IL PRESENTE DISEGNO E' DI PROPRIETA' DELLA PFB SRL. NE E' VIETATA LA DIVULGAZIONE A TERMINI DI LEGGE, SENZA AUTORIZZAZIONE